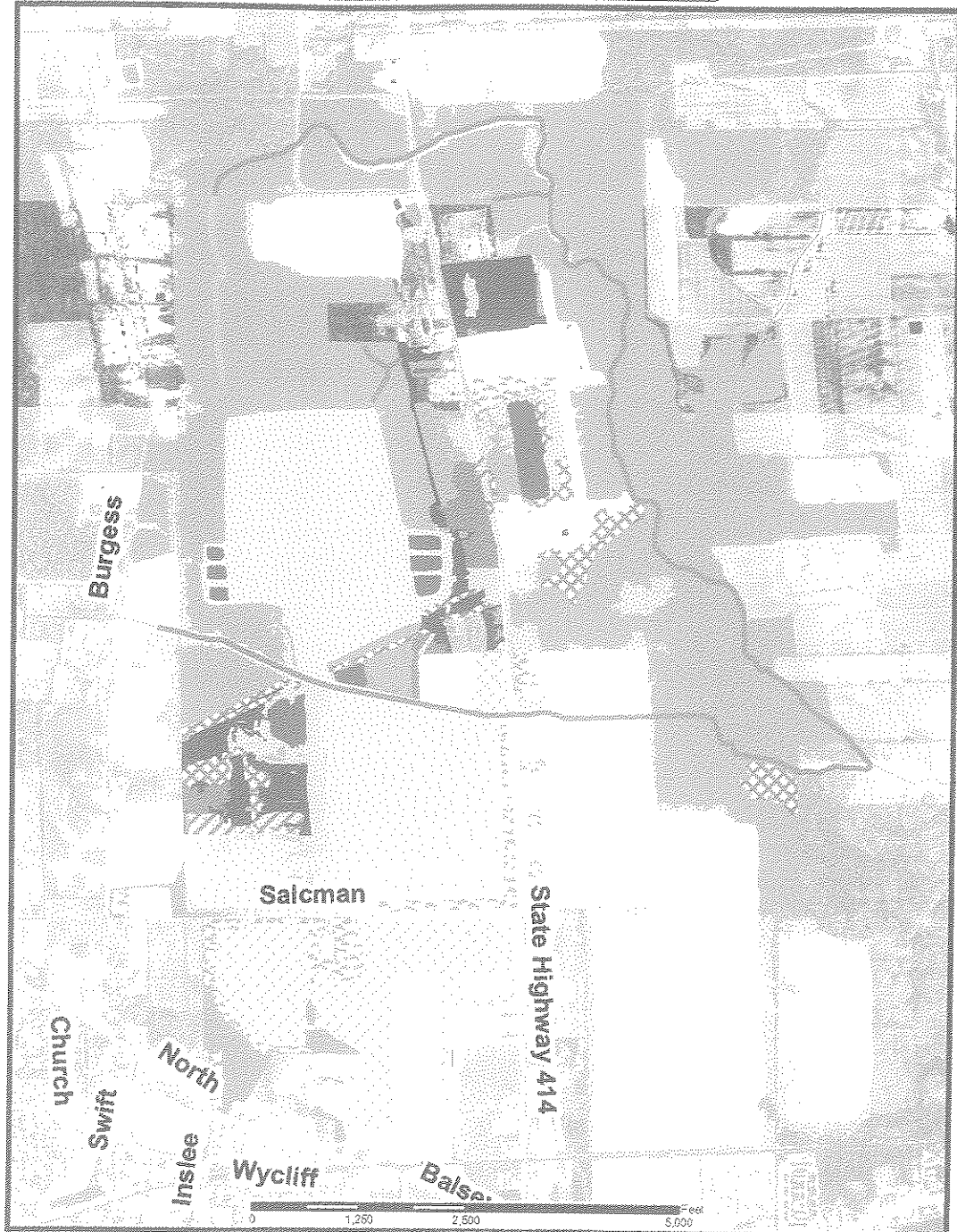
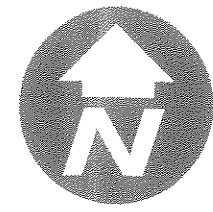


Alternative #2  
Pre-Construction Conditions

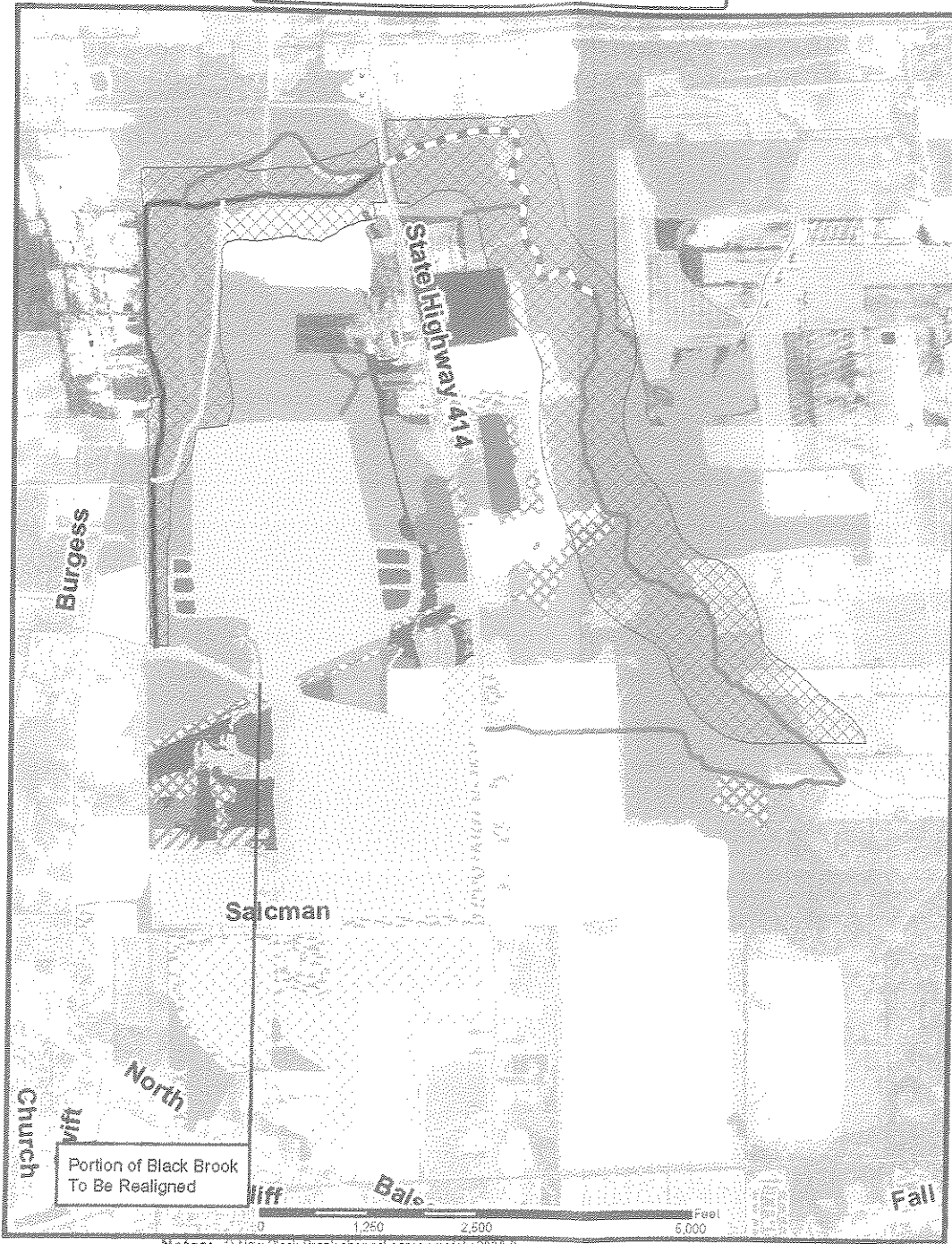


Notes: 1) Existing Black Brook in landfill expansion area approximately 4000 ft

Legend		
Stream Channel	MNE	Shallow Emergent Swamp
Stream Channel Scar	Mowed Lawn	Red Maple Hardwood Swamp
<b>Veg. Community Types</b>		
<b>LAYER</b>		
Cropland Row Crop	Successional Old Field	Oak Hickory
Cropland Field Crop	Successional Disturbed Old Field	Ponded Areas
Landfill	Successional Shrub Land	Marsh Headwater Stream
	Successional Disturbed Substrate Swamp	



Alternative #2  
Post-Construction Conditions



Notes: 1) New Black Brook channel approximately 8000 ft.  
2) Feeder channel 3350 ft.  
3) Red maple forest enhancement of approximately 300 acres  
4) Temporary impacts 19 acres

Legend			
Feeder Channel	<b>Veg. Community Types</b>	Mowed Lawn w/ Trees	Red Maple Hardwood Swamp
Original Channel	Cropland Row Crop	Successional Old Field	Shrub Swamp
Proposed Channel Deepening/Widening	Cropland Field Crop	Successional Disturbed Old Field	Oak Hickory
Proposed Black Brook Realignment	Landfill	Successional Shrub Land	Ponded Areas
Stream Channel Scar	MNE	Successional Disturbed Substrate Swamp	Marsh Headwater Stream
Red Maple Forest Enhancement	Mowed Lawn	Shallow Emergent Swamp	

		SENECA MEADOWS, INC.	
DESIGNED: T. SMITH		FIGURE 4-0B BEFORE & AFTER WETLANDS CONDITIONS - BLACK BROOK REALIGNMENT ALTERNATIVE 2	
DRAWN: T. SMITH	11/07/05	DRAFT GENERIC ENVIRONMENTAL IMPACT STATEMENT	
CHECKED: A.E.F. 12/7/05		DATE 12/7/05	FILE NO. Seneca Meadows_B&A2201wetlands02_C04-02
SUBMITTED: 12/7/05		APPROVED:	